



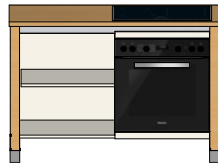
# Geräte- Spül- Module



Herdumbau-Modul  
**bloc 330H/Breite 73cm**  
**bloc 331H/Breite 58cm**



Herdumbau/ Fach re.  
**bloc 430HLF/Br. 103cm/re 30**  
**bloc 531HLF/Br. 118cm/re 45**  
**bloc 530HLF/Br. 133cm/re 60**



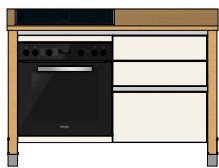
Herdumbau/ Fach li.  
**bloc 430FHR/Br. 103cm/li 30**  
**bloc 531FHR/Br. 118cm/ li 45**  
**bloc 530FHR/Br. 133cm/li 60**



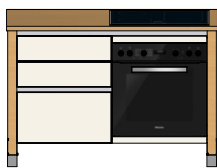
Herdumbau/ Tür re.  
**bloc 430HLT/Br. 103cm/re 30**  
**bloc 531HLT/Br. 118cm/re 45**  
**bloc 530HLT/Br. 133cm/re 60**



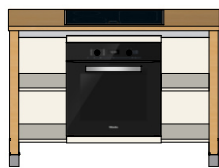
Herdumbau/ Türli.  
**bloc 430THR/Br. 103cm/li 30**  
**bloc 531THR/Br. 118cm/ li 45**  
**bloc 530THR/Br. 133cm/li 60**



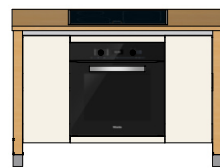
Herdumbau/ Schubladen re.  
**bloc 430HLS/Br. 103cm/re 30**  
**bloc 531HLS/Br. 118cm/re 45**  
**bloc 530HLS/Br. 133cm/re 60**



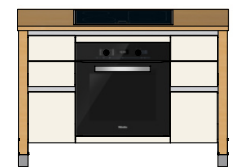
Herdumbau/ Schubladen li.  
**bloc 430SHR/Br. 103cm/li 30**  
**bloc 531SHR/Br. 118cm/ li 45**  
**bloc 530SHR/Br. 133cm/li 60**



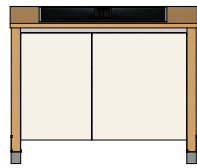
Herdumbau/Fach-Herd-Fach  
**bloc 531FHF/Br. 118cm/re,li 22,5**  
**bloc 530FHF/Br. 133cm/re,li 30**



Herdumbau/Tür-Herd-Tür  
**bloc 530THT/Br. 133cm/re,li 30**



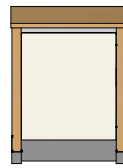
Herdumbau/Schub-Herd-Schub  
**bloc 530SHS/Br. 133cm/re,li 30**



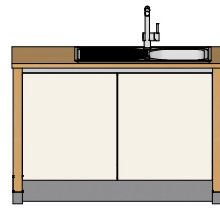
Geräte-Modul-Tischlüfter/2T  
**bloc 410TTT/Breite 103cm**  
**bloc 511TTT/Breite 118cm**  
**bloc 510TTT/Breite 133cm**  
 eingeschränkte Geräteauswahl



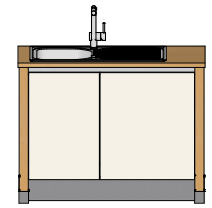
Geräte-Modul-Tischlüfter/2SA  
**bloc 410ST/Breite 103cm**  
**bloc 511ST/Breite 118cm**  
**bloc 510ST/Breite 133cm**  
 eingeschränkte Geräteauswahl



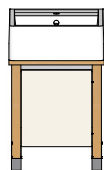
Geräte-Modul  
**bloc 350G/Breite 73cm/G 60**  
**bloc 250G/Breite 58cm/G 45**



Geräte-Sp-Modul/ 1 Tür re.  
**bloc 450GTR/Br 103cm/re+li 45**  
**bloc 551GTR/Br 118c/re T45,li60**  
**bloc 551GTR/Br 118c/re T60,li45**  
**bloc 550GTR/Br 133cm/re+li 60**



Geräte-Sp-Modul/ 1 Tür li.  
**bloc 450TLG/Br 103cm/re+li 45**  
**bloc 551TLG/Br 118c/li T45,re60**  
**bloc 551TLG/Br 118c/li T60,re45**  
**bloc 550TLG/Br 133cm/re+li 60**



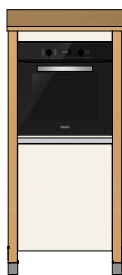
Spül-Modul-Keramik/Tür re.o.li.  
**bloc 311TV/Breite 60cm/Tür**



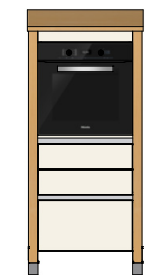
Spül-Modul-Keramik/ 2 Türen  
**bloc 411TTV/Breite 90cm**



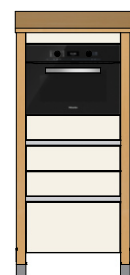
Geräte-Modul  
**bloc 630HG/Br. 73cm/G 60/**  
 unten GS oder KS



Geräte-Modul  
**bloc 630HT/Br. 73cm/G 60/**  
 unten Tür re. o. li.



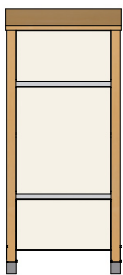
Geräte-Modul  
**bloc 630HS/Br. 73cm/G 60/**  
 unten Schubladen



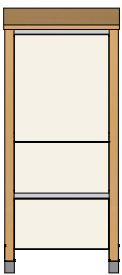
Geräte-Modul  
**bloc 630MS/Br. 73cm/G 45h/**  
 unten Schubladen



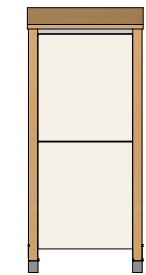
Geräte-Modul  
**bloc 630MHS/Br. 73cm/**  
 G 45+60h/ unten Schubladen



Geräte-Modul  
**bloc 650TGS/Br. 73cm/G 60/**  
 hochgebauter Geschirrsp.  
 eingeschränkte Geräteausw.  
 unten Schublade



Geräte-Modul  
**bloc 620KGS/Br. 73cm/G 60/**  
 hochgebauter Kühls. 88cm h  
 unten Schublade



Geräte-Modul  
**bloc 620KGT/Br. 73cm/G 60/**  
 hochgebauter Kühls. 122cm h  
 Festtür o. Schlepptür